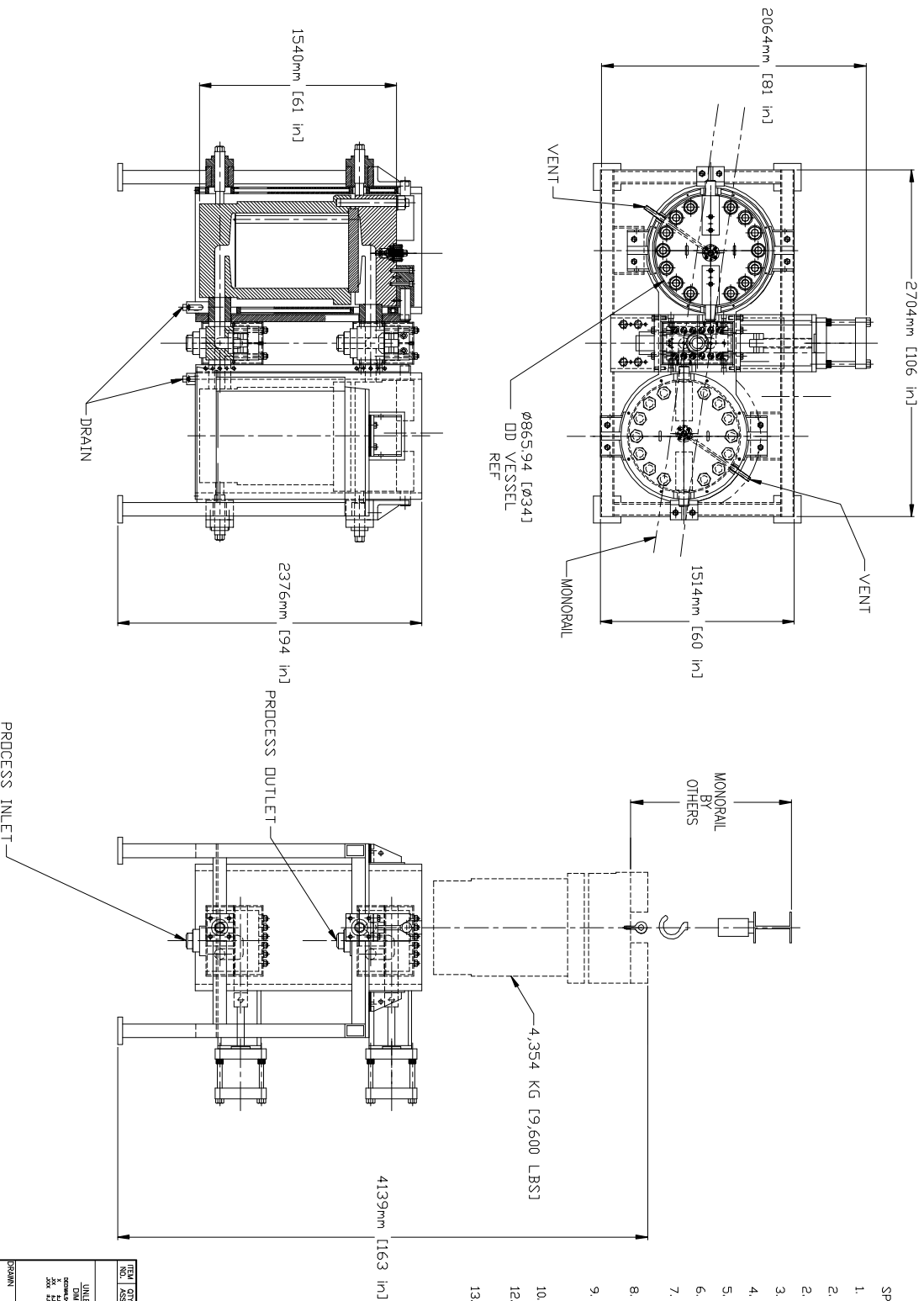


REV.	NOTICE	DESCRIPTION OF CHANGE	DATE	APPROVED BY
1	PROPOSAL DRAWING		10/12/01	HC
-	-	-	-	-



- SPECIFICATIONS:
1. FILTRATION AREA: 62 M²
 2. ELEMENTS: QTY 61 x 1.0 M LONG
 3. FILTRATION RATING: PER CUSTOMER REQUIREMENT.
 4. TYPICAL FLUID DENSITY: 1185 gm/cc
 5. TYPICAL FLUID VISCOSITY: 2500 POISE
 6. MAXIMUM FLOW RATE: 545 TDNS/DAY.
 7. VALVE SIZE: 103 MM BORE
 8. DESIGN & BUILD PER ASME SECTION VIII, DIVISION 1 LATEST ADDENDA.
 9. VESSEL DESIGN PRESSURE: 240 BAR DESIGN TEMPERATURE: 345° C
 10. JACKET DESIGN PRESSURE: 10 BAR AND FULL VACUUM DESIGN TEMPERATURE: 345° C
 11. HEATING MEDIUM: HTF VAPOR
 12. ALL DIMENSIONS APPROXIMATE PENDING A FINAL DESIGN.
 13. APPROX SYSTEM WEIGHT: 17,596 KG [38,800 LBS]

REV.	QTY.	DATE	DESCRIPTION	MATERIAL
TBD			DESCRIPTION	

UNLESS OTHERWISE SPECIFIED	
ALL DIMENSIONS ARE IN INCHES	
FINISH: 316 SS	
WELD: 1/8" 316 SS	
WELD: 1/4" 316 SS	
WELD: 1/2" 316 SS	
WELD: 3/4" 316 SS	
WELD: 1" 316 SS	
WELD: 1.5" 316 SS	
WELD: 2" 316 SS	
WELD: 2.5" 316 SS	
WELD: 3" 316 SS	
WELD: 3.5" 316 SS	
WELD: 4" 316 SS	
WELD: 4.5" 316 SS	
WELD: 5" 316 SS	
WELD: 5.5" 316 SS	
WELD: 6" 316 SS	
WELD: 6.5" 316 SS	
WELD: 7" 316 SS	
WELD: 7.5" 316 SS	
WELD: 8" 316 SS	
WELD: 8.5" 316 SS	
WELD: 9" 316 SS	
WELD: 9.5" 316 SS	
WELD: 10" 316 SS	
WELD: 10.5" 316 SS	
WELD: 11" 316 SS	
WELD: 11.5" 316 SS	
WELD: 12" 316 SS	
WELD: 12.5" 316 SS	
WELD: 13" 316 SS	
WELD: 13.5" 316 SS	
WELD: 14" 316 SS	
WELD: 14.5" 316 SS	
WELD: 15" 316 SS	
WELD: 15.5" 316 SS	
WELD: 16" 316 SS	
WELD: 16.5" 316 SS	
WELD: 17" 316 SS	
WELD: 17.5" 316 SS	
WELD: 18" 316 SS	
WELD: 18.5" 316 SS	
WELD: 19" 316 SS	
WELD: 19.5" 316 SS	
WELD: 20" 316 SS	
WELD: 20.5" 316 SS	
WELD: 21" 316 SS	
WELD: 21.5" 316 SS	
WELD: 22" 316 SS	
WELD: 22.5" 316 SS	
WELD: 23" 316 SS	
WELD: 23.5" 316 SS	
WELD: 24" 316 SS	
WELD: 24.5" 316 SS	
WELD: 25" 316 SS	
WELD: 25.5" 316 SS	
WELD: 26" 316 SS	
WELD: 26.5" 316 SS	
WELD: 27" 316 SS	
WELD: 27.5" 316 SS	
WELD: 28" 316 SS	
WELD: 28.5" 316 SS	
WELD: 29" 316 SS	
WELD: 29.5" 316 SS	
WELD: 30" 316 SS	
WELD: 30.5" 316 SS	
WELD: 31" 316 SS	
WELD: 31.5" 316 SS	
WELD: 32" 316 SS	
WELD: 32.5" 316 SS	
WELD: 33" 316 SS	
WELD: 33.5" 316 SS	
WELD: 34" 316 SS	
WELD: 34.5" 316 SS	
WELD: 35" 316 SS	
WELD: 35.5" 316 SS	
WELD: 36" 316 SS	
WELD: 36.5" 316 SS	
WELD: 37" 316 SS	
WELD: 37.5" 316 SS	
WELD: 38" 316 SS	
WELD: 38.5" 316 SS	
WELD: 39" 316 SS	
WELD: 39.5" 316 SS	
WELD: 40" 316 SS	
WELD: 40.5" 316 SS	
WELD: 41" 316 SS	
WELD: 41.5" 316 SS	
WELD: 42" 316 SS	
WELD: 42.5" 316 SS	
WELD: 43" 316 SS	
WELD: 43.5" 316 SS	
WELD: 44" 316 SS	
WELD: 44.5" 316 SS	
WELD: 45" 316 SS	
WELD: 45.5" 316 SS	
WELD: 46" 316 SS	
WELD: 46.5" 316 SS	
WELD: 47" 316 SS	
WELD: 47.5" 316 SS	
WELD: 48" 316 SS	
WELD: 48.5" 316 SS	
WELD: 49" 316 SS	
WELD: 49.5" 316 SS	
WELD: 50" 316 SS	
WELD: 50.5" 316 SS	
WELD: 51" 316 SS	
WELD: 51.5" 316 SS	
WELD: 52" 316 SS	
WELD: 52.5" 316 SS	
WELD: 53" 316 SS	
WELD: 53.5" 316 SS	
WELD: 54" 316 SS	
WELD: 54.5" 316 SS	
WELD: 55" 316 SS	
WELD: 55.5" 316 SS	
WELD: 56" 316 SS	
WELD: 56.5" 316 SS	
WELD: 57" 316 SS	
WELD: 57.5" 316 SS	
WELD: 58" 316 SS	
WELD: 58.5" 316 SS	
WELD: 59" 316 SS	
WELD: 59.5" 316 SS	
WELD: 60" 316 SS	
WELD: 60.5" 316 SS	
WELD: 61" 316 SS	
WELD: 61.5" 316 SS	
WELD: 62" 316 SS	
WELD: 62.5" 316 SS	
WELD: 63" 316 SS	
WELD: 63.5" 316 SS	
WELD: 64" 316 SS	
WELD: 64.5" 316 SS	
WELD: 65" 316 SS	
WELD: 65.5" 316 SS	
WELD: 66" 316 SS	
WELD: 66.5" 316 SS	
WELD: 67" 316 SS	
WELD: 67.5" 316 SS	
WELD: 68" 316 SS	
WELD: 68.5" 316 SS	
WELD: 69" 316 SS	
WELD: 69.5" 316 SS	
WELD: 70" 316 SS	
WELD: 70.5" 316 SS	
WELD: 71" 316 SS	
WELD: 71.5" 316 SS	
WELD: 72" 316 SS	
WELD: 72.5" 316 SS	
WELD: 73" 316 SS	
WELD: 73.5" 316 SS	
WELD: 74" 316 SS	
WELD: 74.5" 316 SS	
WELD: 75" 316 SS	
WELD: 75.5" 316 SS	
WELD: 76" 316 SS	
WELD: 76.5" 316 SS	
WELD: 77" 316 SS	
WELD: 77.5" 316 SS	
WELD: 78" 316 SS	
WELD: 78.5" 316 SS	
WELD: 79" 316 SS	
WELD: 79.5" 316 SS	
WELD: 80" 316 SS	
WELD: 80.5" 316 SS	
WELD: 81" 316 SS	
WELD: 81.5" 316 SS	
WELD: 82" 316 SS	
WELD: 82.5" 316 SS	
WELD: 83" 316 SS	
WELD: 83.5" 316 SS	
WELD: 84" 316 SS	
WELD: 84.5" 316 SS	
WELD: 85" 316 SS	
WELD: 85.5" 316 SS	
WELD: 86" 316 SS	
WELD: 86.5" 316 SS	
WELD: 87" 316 SS	
WELD: 87.5" 316 SS	
WELD: 88" 316 SS	
WELD: 88.5" 316 SS	
WELD: 89" 316 SS	
WELD: 89.5" 316 SS	
WELD: 90" 316 SS	
WELD: 90.5" 316 SS	
WELD: 91" 316 SS	
WELD: 91.5" 316 SS	
WELD: 92" 316 SS	
WELD: 92.5" 316 SS	
WELD: 93" 316 SS	
WELD: 93.5" 316 SS	
WELD: 94" 316 SS	
WELD: 94.5" 316 SS	
WELD: 95" 316 SS	
WELD: 95.5" 316 SS	
WELD: 96" 316 SS	
WELD: 96.5" 316 SS	
WELD: 97" 316 SS	
WELD: 97.5" 316 SS	
WELD: 98" 316 SS	
WELD: 98.5" 316 SS	
WELD: 99" 316 SS	
WELD: 99.5" 316 SS	
WELD: 100" 316 SS	

APPROVED	DATE	DESCRIPTION
HC	11/16/01	

HEAT TREAT	WEIGHT	SCALE
-	-	NONE

DRAWING NO.	SHEET	REV.
DPS 62-5	1 OF 1	1

THIS DRAWING IS THE PROPERTY OF MAAG AND IS LOANED FOR CONSTRUCTION USE ONLY AND SHOULD BE RETURNED TO THE OFFICE OF MAAG PUMP SYSTEMS, DUBLIN, IRE.

maag pump systems, TEXTRON Inc.
CHARLOTTE, NC, USA

DUPLEX SYSTEM