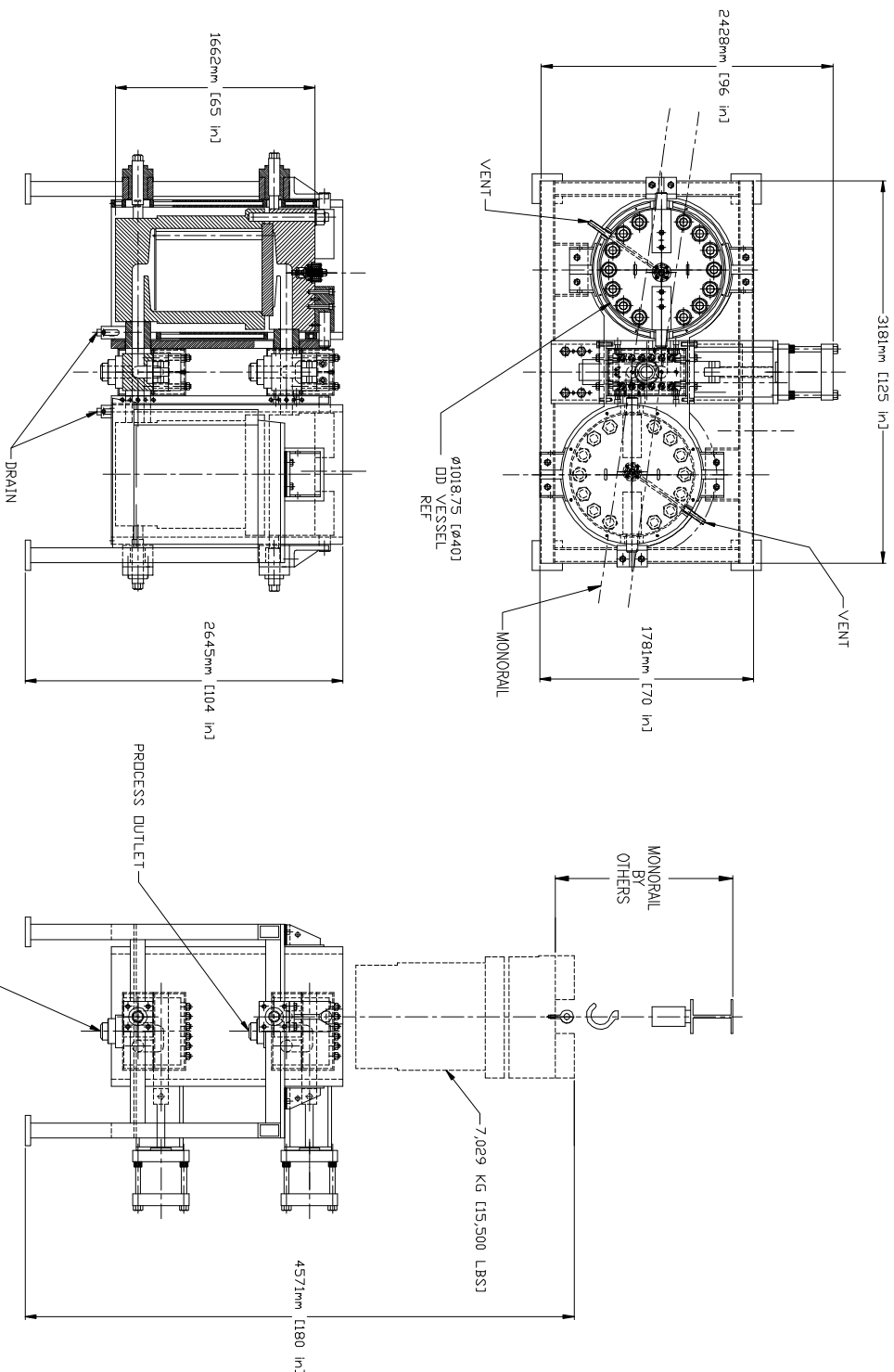


REV.	NOTICE	DESCRIPTION OF CHANGE	DATE	APPROVED
1	—	PROPOSAL DRAWING	10/12/01	HC
—	—	—	—	—



- SPECIFICATIONS:**
1. FILTRATION AREA: 93 M<sup>2</sup>
  2. ELEMENTS: QTY 91 x 1.0 M LONG
  3. FILTRATION RATING: PER CUSTOMER REQUIREMENT.
  4. TYPICAL FLUID DENSITY: 1185 gm/cc
  5. MAXIMUM FLOW RATE: 814 TONS/DAY.
  6. VALVE SIZE: 124 MM BORE
  7. DESIGN & BUILD PER ASME SECTION VIII, DIVISION 1 LATEST ADDENDA.
  8. VESSEL DESIGN PRESSURE: 240 BAR  
DESIGN TEMPERATURE: 345° C
  9. JACKET DESIGN PRESSURE: 10 BAR  
AND FULL VACUUM  
DESIGN TEMPERATURE: 345° C
  10. HEATING MEDIUM: HTF VAPOR
  12. ALL DIMENSIONS APPROXIMATE PENDING A FINAL DESIGN.
  13. APPROX SYETM WEIGHT: 26,350 KG (58,500 LBS)

ITEM QTY / UNIT	DESCRIPTION	MATERIAL
TBD	<b>BILL OF MATERIAL</b>	
UNLESS OTHERWISE SPECIFIED DIMENSIONS ARE IN INCHES		
3	MONORAIL	ASME SA-240
1	JACK	ASME SA-240
1	INTERNAL SEAL	ASME SA-240
1	BRAY CONTROLLER	ASME SA-240
DRAWN	HC	11/16/01
CHECKED		
APPROVED		
HEAT ASSY	WEIGHT	SCALE
—	—	—
DRAWING NO. <b>DPS 93-6</b>		SHEET 1 OF 1
DUPLIX SYSTEM		REV. 1
maag pump systems, TEXTRON Inc. CHARLOTTE, NC, USA		

THIS DRAWING IS THE PROPERTY OF MAAG AND IS LOANED FOR CONSTRUCTION USE ONLY AND SHOULD BE RETURNED TO THE OFFICE OF MAAG PUMP SYSTEMS, CHARLOTTE, NC