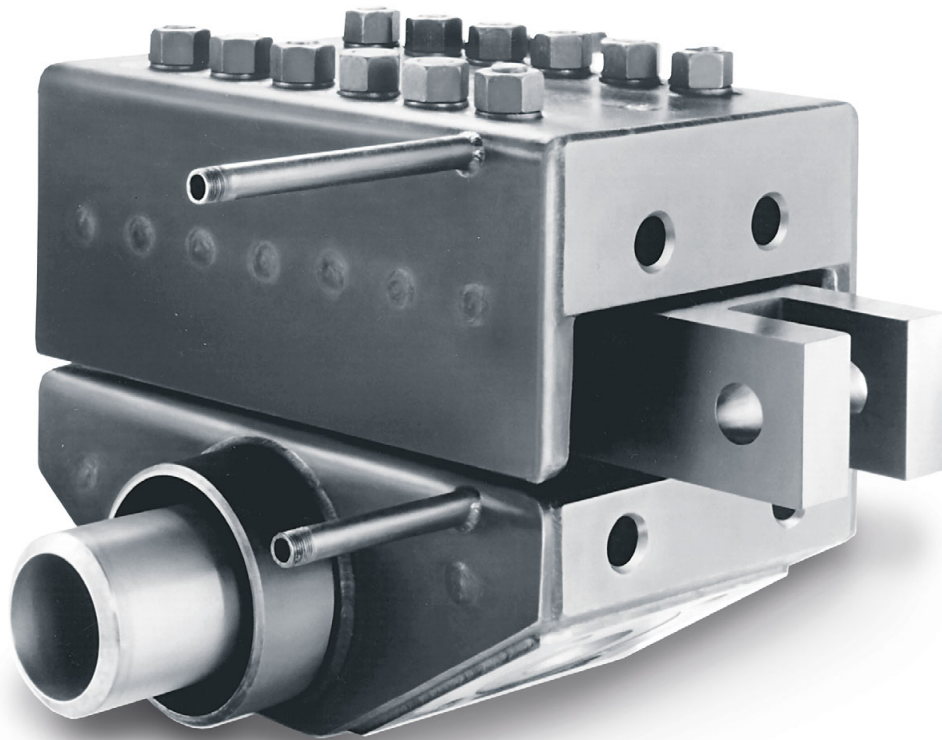


divex[®]

Diverter valve for the polymer industry



maag pump systems diverter valve is a proven, simple slide-type 3-way valve which allows transfer without disrupting line operation. It is designed for highly viscous fluids.

The valve is used in pellet, film and fiber manufacturing applications for filtration systems and as a dump valve to isolate pumps, extruders, pelletizers and other downstream equipment.

Your benefits

- Metal-to-metal seal requires no packing
- No stagnation areas
- Smooth, even transfer from one port to the other for uninterrupted product flow
- Low maintenance required
- Patented side rail system for accurate positioning
- Integral heating jacket

Typical pumping media

- Cellulose acetate
- Elastomers
- Epoxy resin
- Phenolic resin
- Polyacrylonitrile
- Polyamide
- Polycarbonate
- Polybutylene Terephthalate
- Polyethylene Terephthalate
- Polymethylmethacrylate
- Polypropylene
- Polystyrene (incl. ABS, EPS)
- Polysulphone
- Silicone
- SBR Latex
- And others

Materials

- Body and backing plates carbon steel
- H-13 heat treated slide plates
- Wet surfaces are plated with TDC

Technical data:

Bore diameter:	28-105 mm
Capacity:	900-16,000 kg/h
Temperature:	To 370 °C
Pressure:	To 340 bar

