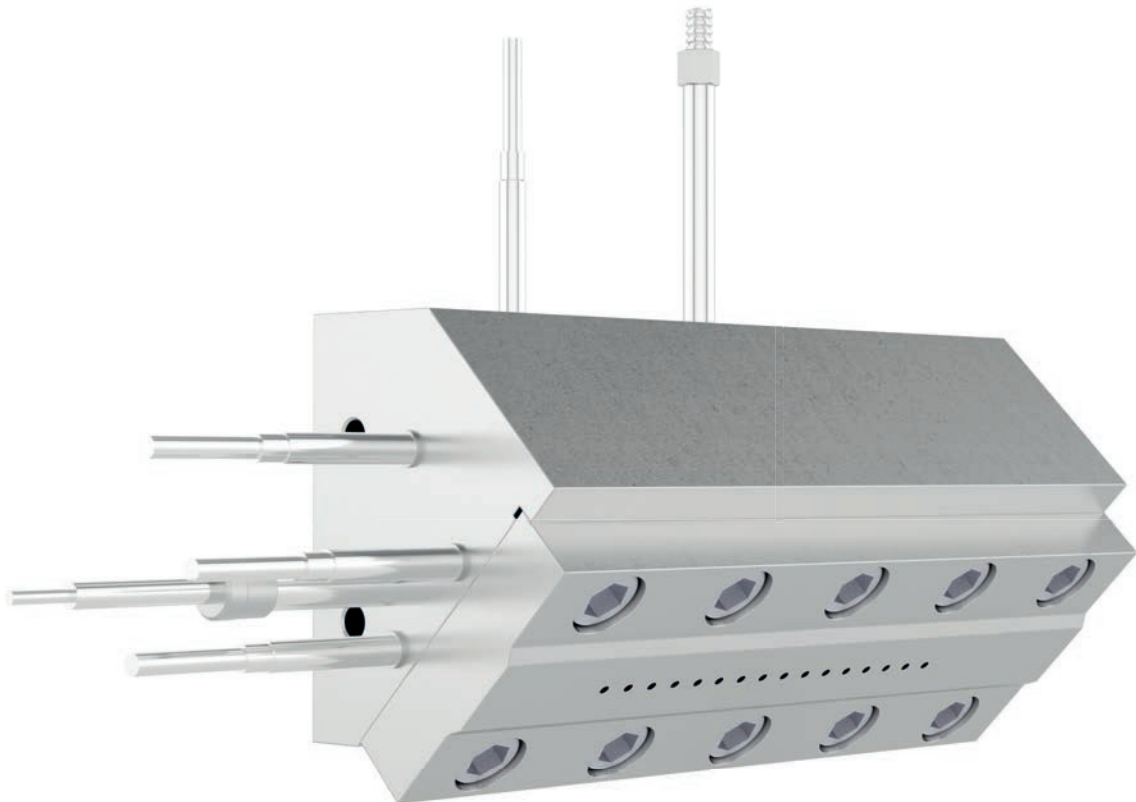


Die Head PFS

For extrusion of carrier/active ingredient combination



Die heads are used in all strand pelletizing systems for extrusion of strand profiles. The Die Head PFS series has been specifically developed for applications in pharmaceutical and food processes. It is used downstream of single and dual screw extruders as well as after reactor vessels.

Benefits:

- Rheologically designed die head tailored to the extrusion's formulation
- Absolute uniform and homogeneous melt distribution
- No separation or de-mixing of the components
- Short flow path ensures minimal dwell time of polymer melt
- Low pressure drop
- Easy up-scaling; from the laboratory line to commercial production scale
- Compatible with all extruders and reactors

SIMPLY **BETTER** PELLETS.

Die Head PFS

For extrusion of carrier/active ingredient combination

Application areas:

- Production of micro-pellets to avoid milling
- Continuous operation or batch production
- For profile extrusion from an extruder or reactor vessel
- Process monitoring by means of pressure sensors and temperature sensors
- Optional port for Near-infrared-spectrometer (NIR)

Technische Daten

Technical Data	series 50	series 100	series 200
Heating power:	1.2 kW	2.0 kW	3.0 kW
Temperature range:	30° to 200°C		
No. of strands:	1-6	5-10	10-25
Throughput:	0.3-5 kg/h	2-20 kg/h	10-60 kg/h



Global contacts, see www.maag.com
Contact us at contact@maag.com

The data and illustrations refer to the date of printing. Necessary changes can be made at any time without special notice. Maag's products and processes are protected by IP rights.

FROM LAB TO LINE.